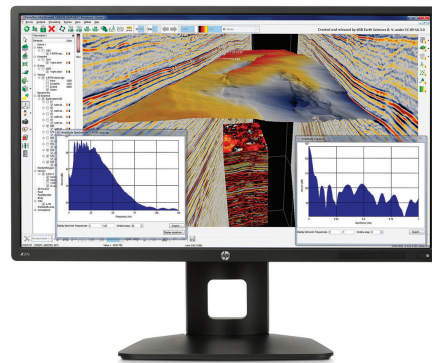


HP Z27s 27-inch IPS UHD Display



Join the Ultra High Definition movement and expand your visual workspace with the HP Z27s 27-inch IPS UHD Display, which delivers an extra-large screen with UHD/4K¹ presentation and flexible connectivity and comfort features.



UHD for demanding projects.

- Enjoy massive 3840 x 2160 resolution, sRGB color gamut, and 1.07 billion colors² for incredible color presentation of highly-detailed digital workflows. Wide viewing angles keep the line of sight open for one or many viewers.

Get connected.

- Connect your display to a workstation, PC, and range of digital video devices with DisplayPort, mini-DisplayPort, HDMI, and four USB 3.0 ports. Use the two side-located USB ports for easy access to your most-used peripherals.

Big-screen presentation for all your devices.

- Instantly mirror your smart phone or tablet content to the large screen through an easy MHL connection that also keeps your devices charged and ready to go.³

See more, do more.

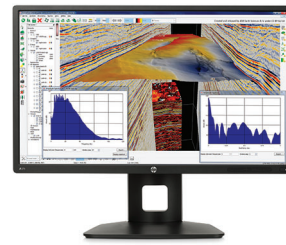
- Get expansive views of your projects, documents, and media with 8MP—4x that of a Full HD display. Picture-in-picture and picture-by-picture allow you to display mobile device, PC feeds and view up to four Full HD sources⁴ onscreen in native mode.

Features

- Find your sweet spot with customizable tilt, height adjustment, swivel, and pivot settings—plus an integrated HP Quick Release that allows you to mount the display on a wall.⁵
- Design the screen for how you work with HP Display Assistant software.
- Rest assured that your IT investment is supported by a three-year standard limited warranty. To extend your protection beyond the standard warranties, select optional HP Care Pack Services.⁶
- Reduce power consumption and help lower costs with an intelligent, energy-efficient design that is ENERGY STAR[®], TCO qualified, EPEAT[®] Gold registered,⁷ and includes mercury-free display backlights, low halogen,⁸ and arsenic-free display glass.



HP Z27s 27-inch IPS UHD Display Specifications Table



Product Number	J3G07A4
Display Size (diagonal)	27"
Display Type	IPS w/LED backlight
Panel Active Area	596.16 x 335.34 mm; 23.47 x 13.2 in
Viewing Angle	178° horizontal; 178° vertical
Brightness	300 cd/m ² ¹
Contrast Ratio	1000:1 static; 5000000:1 dynamic ¹
Response Ratio	6 ms gray to gray (With overdrive) ¹
Aspect Ratio	16:9
Native Resolution	3840 x 2160 ³
Resolutions Supported	3840 x 2160; 2560 x 1600; 2560 x 1440; 1920 x 1200; 1920 x 1080; 1680 x 1050; 1440 x 900; 1280 x 1024; 1280 x 720; 1024 x 768; 800 x 600; 720 x 400; 640 x 480
Display Features	Plug and Play; Anti-glare; User programmable; Language selection; On-screen controls; LED Backlights; In plane switching
User Controls	Menu; 4-button OSD; Power
Input Signal	1 HDMI 1.4; 1 MHL 2.0 /HDMI 1.4; 1 DisplayPort 1.2; 1 Mini-DisplayPort; ² HDCP support on all inputs
Ports and Connectors	4 USB 3.0; 1 audio
Input Power	Input voltage: 100 to 240 VAC
Power Consumption	86.9 W (maximum), 60.8 W (typical), 0.3978 W (standby)
Dimensions with Stand (W x D x H)	24.62 x 9.54 x 21.1 in 62.56 x 24.24 x 53.59 cm
Dimensions without Stand (W x D x H)	24.62 x 2.4 x 14.57 in 62.56 x 6.09 x 37.03 cm
Weight	16.98 lb 7.7 kg With stand
Ergonomic Features	Tilt: -5 to +20°; Swivel: 45° ±2°; Pivot rotation 90°
Environmental	Arsenic-free display glass; Mercury-free display backlights; Low halogen ⁴
Energy Efficiency Compliance	ENERGY STAR® certified

See important legal disclaimers on the last page

Accessories and services (not included)

HP LCD Monitor Quick Release Mount



HP Quick Release is an easy to use, 100 mm VESA-compliant, LCD monitor mounting solution that allows you to quickly and securely attach a flat panel monitor to a variety of stands, brackets, arms or wall mounts. HP Quick Release can also be used for mounting any combination of devices that are compatible with the 100 mm VESA Flat Display Mounting Interface Standard. The failsafe "Sure-Lock" mechanism snaps the monitor (or mounted device) securely in place, and can be further secured with a theft-deterrent security screw.

Product number: EM870AA

HP Large Display Speaker Kit



Add a full range of sound (10 watts each) with these rear-facing speakers that discreetly attach to the rear of the digital signage display.

Product number: F2B36AA

HP LCD Speaker Bar



The LCD Speaker Bar seamlessly attaches to the bezel of the HP Business Monitor and provides full multimedia capabilities.

Product number: NQ576AA

HP Business PC Security Lock Kit



Protect your HP Business PC from tampering or theft in public locations by locking-down peripherals such as mice, keyboards, monitors or USB security devices and preventing the removal of the PC chassis cover.

Product number: PV606AA

HP DisplayPort Cable Kit



HP DisplayPort Cable Kit

Product number: VN567AA

Messaging Footnotes

¹ 4K content required.

² All specifications represent the typical specifications provided by HP's component manufacturers; actual performance may vary either higher or lower.

³ MHL 2.0 port will charge a MHL compatible smart phone and tablet battery. Includes a DisplayPort to HDMI dongle to increase connect flexibility. Requires the smart phone or tablet to be enabled for MHL or have an HDMI dongle to connect to the monitor. See your mobile device specifications. Max display resolution is Full HD.

⁴ HD content required.

⁵ Mounting hardware sold separately.

⁶ Service levels and response times for HP Care Packs may vary depending on your geographic location. Service starts on date of hardware purchase. Restrictions and limitations apply. For details, visit www.hp.com/go/cpc. HP services are governed by the applicable HP terms and conditions of service provided or indicated to Customer at the time of purchase. Customer may have additional statutory rights according to applicable local laws, and such rights are not in any way affected by the HP terms and conditions of service or the HP Limited Warranty provided with your HP Product.

⁷ EPEAT® registered where applicable. EPEAT registration varies by country. See www.epeat.net for registration status by country.

⁸ External power supplies, power cords, cables and peripherals are not Low Halogen. Service parts obtained after purchase may not be Low Halogen.

Technical Specifications Footnotes

¹ All specifications represent the typical specifications provided by HP's component manufacturers; actual performance may vary either higher or lower.

² MHL 2.0 port will charge a MHL compatible smart phone and tablet battery. Requires the smart phone or tablet to be enabled for MHL or have an HDMI dongle to connect to the monitor. See your mobile device specifications.

³ The video card must be capable of supporting 3840 × 2160 – 60Hz to drive the monitor at the Preferred Mode.

⁴ External power supplies, power cords, cables and peripherals are not Low Halogen. Service parts obtained after purchase may not be Low Halogen.

Sign up for updates
hp.com/go/getupdated

Learn more at
hp.com

© Copyright 2015 Hewlett-Packard Development Company, L.P. The information contained herein is subject to change without notice. The only warranties for HP products and services are set forth in the express warranty statements accompanying such products and services. Nothing herein should be construed as constituting an additional warranty. HP shall not be liable for technical or editorial errors or omissions contained herein.

ENERGY STAR® and the ENERGY STAR® mark are registered trademarks of the U.S. Environmental Protection Agency.

