

USB to Serial RS232 and Parallel Adapter Cable

ICUSB2321284

- DE: Bedienungsanleitung - de.startech.com
- FR: Guide de l'utilisateur - fr.startech.com
- ES: Guía del usuario - es.startech.com
- IT: Guida per l'uso - it.startech.com
- NL: Gebruiksaanwijzing - nl.startech.com
- PT: Guia do usuário - pt.startech.com

Packaging Contents

- 1 x USB to Serial and Parallel Adapter Cable

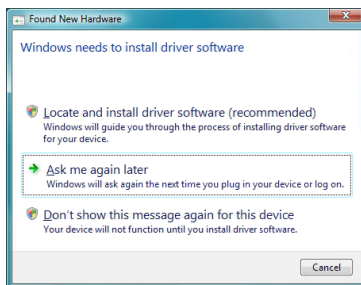
System Requirements

- USB enabled computer system with available USB port
- Microsoft® Windows® XP/Vista/7 (32/64-bit), CE 5.0, or Linux®

Installation

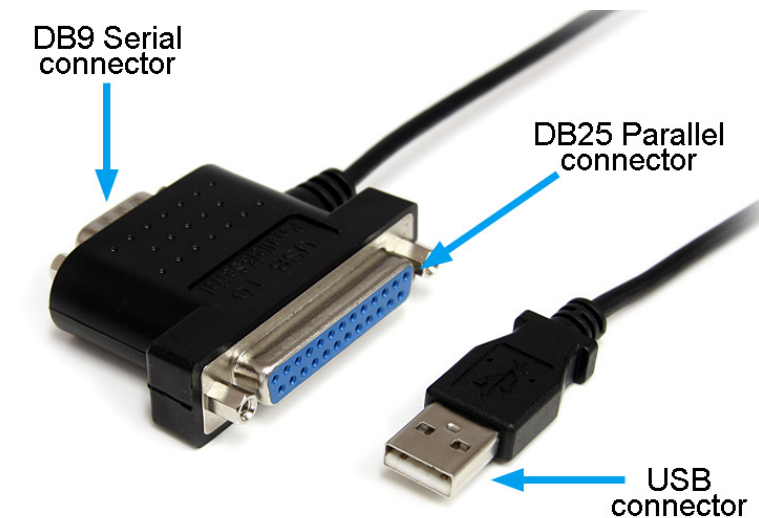
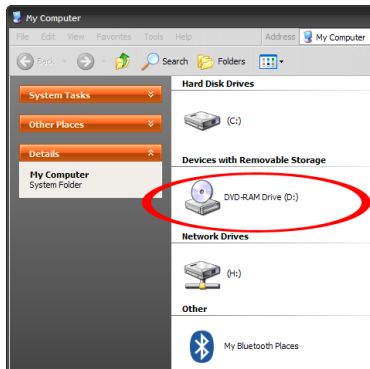
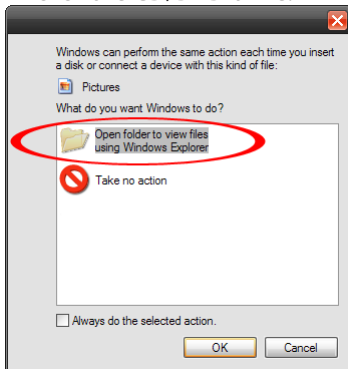
Windows XP/Vista/7

1. Connect the USB adapter to an available USB port on the host computer system.
2. If Windows attempts to install the drivers automatically, cancel any prompts that appear, and insert the Driver CD into the computer's CD/DVD drive.



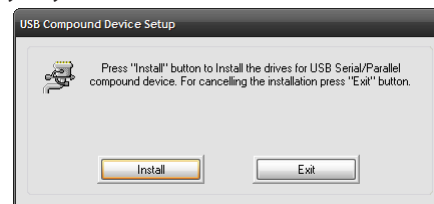
*installation photos for reference only

3. If AutoPlay is enabled, choose the option to browse/view the contents of the CD. Otherwise, open My Computer and double-click the CD/DVD drive.



*actual product may vary from photos

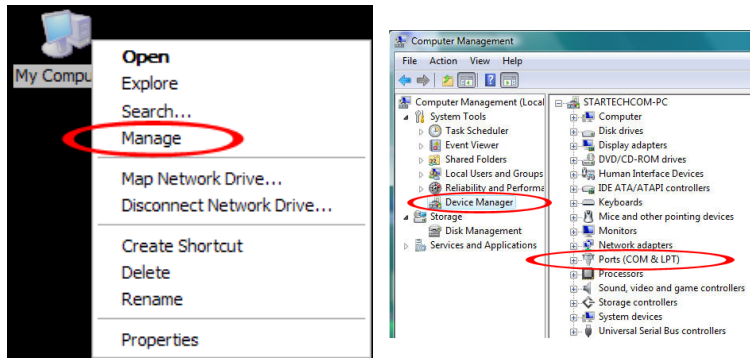
4. Go into the "ICUSB2321284" folder and then the folder for your operating system version. Double-click the "Setup.exe" file to being the installation wizard.
5. Proceed through the installation wizard. If you are prompted with a Windows Security dialog box, click the "Install this driver software anyway" button.



6. Once the installation wizard is complete, the drivers for the USB adapter will be successfully installed.

Verifying Installation

From the main desktop, right-click on **"My Computer"** (**"Computer"** in Vista/7), then select **"Manage"**. In the new Computer Management window, select Device Manager from the list in the left window panel.



Double-click on the **"Ports (COM & LPT)"** category. There will be new devices for a **USB to Serial** and **USB to Parallel port**.

To change any settings for the ports (e.g. port number), right-click on the port and select **"Properties"**.

Specifications

Host Interface	USB 1.1
Chipset ID	MosChip MCS7715CQ-GR
Connectors	1 x DB9 male 1 x DB25 female 1 x USB type A male
LEDs	N/A
Supported Protocols	RS232, IEEE 1284 (SPP)
Maximum Data Transfer Rate	921.6 Kbps
Serial Data Bits	5, 6, 7, 8
Serial Parity	Even, Odd, Mark, Space, None
Operating Temperature	0°C ~ 60°C (32°F ~ 140°F)
Humidity	60% ~ 80% RH
Integrated Cable Length	92 cm
Weight	72g

FCC Compliance Statement

This equipment has been tested and found to comply with the limits for a Class B digital device, pursuant to part 15 of the FCC Rules. These limits are designed to provide reasonable protection against harmful interference in a residential installation. This equipment generates, uses and can radiate radio frequency energy and, if not installed and used in accordance with the instructions, may cause harmful interference to radio communications. However, there is no guarantee that interference will not occur in a particular installation. If this equipment does cause harmful interference to radio or television reception, which can be determined by turning the equipment off and on, the user is encouraged to try to correct the interference by one or more of the following measures:

- Reorient or relocate the receiving antenna.
- Increase the separation between the equipment and receiver.
- Connect the equipment into an outlet on a circuit different from that to which the receiver is connected.
- Consult the dealer or an experienced radio/TV technician for help.

Use of Trademarks, Registered Trademarks, and other Protected Names and Symbols

This manual may make reference to trademarks, registered trademarks, and other protected names and/or symbols of third-party companies not related in any way to StarTech.com. Where they occur these references are for illustrative purposes only and do not represent an endorsement of a product or service by StarTech.com, or an endorsement of the product(s) to which this manual applies by the third-party company in question. Regardless of any direct acknowledgement elsewhere in the body of this document, StarTech.com hereby acknowledges that all trademarks, registered trademarks, service marks, and other protected names and/or symbols contained in this manual and related documents are the property of their respective holders.

Technical Support

StarTech.com's lifetime technical support is an integral part of our commitment to provide industry-leading solutions. If you ever need help with your product, visit www.startech.com/support and access our comprehensive selection of online tools, documentation, and downloads.

For the latest drivers/software, please visit www.startech.com/downloads

Warranty Information

This product is backed by a three (3) year warranty.

In addition, StarTech.com warrants its products against defects in materials and workmanship for the periods noted, following the initial date of purchase. During this period, the products may be returned for repair, or replacement with equivalent products at our discretion. The warranty covers parts and labor costs only. StarTech.com does not warrant its products from defects or damages arising from misuse, abuse, alteration, or normal wear and tear.

Limitation of Liability

In no event shall the liability of StarTech.com Ltd. and StarTech.com USA LLP (or their officers, directors, employees or agents) for any damages (whether direct or indirect, special, punitive, incidental, consequential, or otherwise), loss of profits, loss of business, or any pecuniary loss, arising out of or related to the use of the product exceed the actual price paid for the product. Some states do not allow the exclusion or limitation of incidental or consequential damages. If such laws apply, the limitations or exclusions contained in this statement may not apply to you.