

## USB 3.0 to HDMI® Video Adapter with USB Hub Port

USB32HDEH



\*actual product may vary from photos

DE: Bedienungsanleitung - [de.startech.com](http://de.startech.com)

FR: Guide de l'utilisateur - [fr.startech.com](http://fr.startech.com)

ES: Guía del usuario - [es.startech.com](http://es.startech.com)

IT: Guida per l'uso - [it.startech.com](http://it.startech.com)

NL: Gebruiksaanwijzing - [nl.startech.com](http://nl.startech.com)

PT: Guia do usuário - [pt.startech.com](http://pt.startech.com)

For the most up-to-date information, please visit: [www.startech.com](http://www.startech.com)

## FCC Compliance Statement

This equipment has been tested and found to comply with the limits for a Class B digital device, pursuant to part 15 of the FCC Rules. These limits are designed to provide reasonable protection against harmful interference in a residential installation. This equipment generates, uses and can radiate radio frequency energy and, if not installed and used in accordance with the instructions, may cause harmful interference to radio communications. However, there is no guarantee that interference will not occur in a particular installation. If this equipment does cause harmful interference to radio or television reception, which can be determined by turning the equipment off and on, the user is encouraged to try to correct the interference by one or more of the following measures:

- Reorient or relocate the receiving antenna.
- Increase the separation between the equipment and receiver.
- Connect the equipment into an outlet on a circuit different from that to which the receiver is connected.
- Consult the dealer or an experienced radio/TV technician for help.

## Use of Trademarks, Registered Trademarks, and other Protected Names and Symbols

This manual may make reference to trademarks, registered trademarks, and other protected names and/or symbols of third-party companies not related in any way to StarTech.com. Where they occur these references are for illustrative purposes only and do not represent an endorsement of a product or service by StarTech.com, or an endorsement of the product(s) to which this manual applies by the third-party company in question. Regardless of any direct acknowledgement elsewhere in the body of this document, StarTech.com hereby acknowledges that all trademarks, registered trademarks, service marks, and other protected names and/or symbols contained in this manual and related documents are the property of their respective holders.

# Table of Contents

<b>Introduction</b> .....	<b>1</b>
Packaging Contents .....	1
System Requirements.....	1
<b>Installation</b> .....	<b>3</b>
Driver Installation.....	3
Hardware Installation .....	4
USB HUB Installation (Optional) .....	4
Multiple USB Video Adapter Installation .....	5
Configuring the USB Video Adapter.....	5
Display Settings .....	6
Identify Monitors .....	6
Multi-Display Control Panel .....	7
<b>Specifications</b> .....	<b>8</b>
<b>Technical Support</b> .....	<b>9</b>
<b>Warranty Information</b> .....	<b>9</b>

# Introduction

The USB32HDEH USB 3.0 to HDMI® Adapter turns an available USB 3.0 port into an HDMI® output port with 1920x1200 / 1080p video support. The adapter features a built-in 1-Port USB 3.0 hub, which offers a connection port in place of the USB port used for connecting the HDMI® adapter – an ideal workaround for Ultrabook™ or laptop users where only a limited number of USB ports are available.

The USB to HDMI® adapter functions as an external graphics card, providing a convenient way to add multi-monitor capability to a USB 3.0-enabled desktop or laptop computer (optimal performance from USB 3.0, backward compatible with USB 2.0).

Leveraging the high-bandwidth (5 Gbps) SuperSpeed USB 3.0 interface, the adapter delivers smooth, high-definition content to your HDMI® display / projector. The adapter can be used to mirror your primary desktop, showing the same image on each display, or to extend your desktop to double your workspace and increase your productivity. The included HDMI® to DVI adapter also allows you to use this device with a DVI display.

Backed by a StarTech.com 2-year warranty and free lifetime technical support.

## Packaging Contents

- 1x USB 3.0 to HDMI® Adapter
- 1x HDMI® to DVI adapter
- 1x Software CD
- 1x Instruction Manual

## System Requirements

- USB enabled computer system with available USB 3.0 or 2.0 port
- CPU: Quad Core 2.4GHz or Higher (i5 recommended)
- RAM: 4GB or higher
- Microsoft® 7(32/64-bit) 8(32/64-bit)



\*actual product may vary from photos

**Example:** External USB device attached to pass-through port of USB32DVIEH

Front



Back



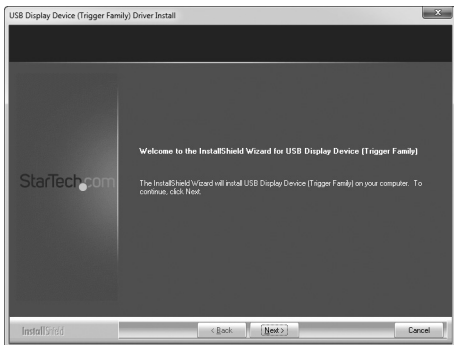
# Installation

## Driver Installation

Please ensure that the driver installation is complete prior to the physical installation (plugging in) of the USB 3.0 Video Adapter

1. Download the latest drivers from the StarTech.com website (recommended), or insert the included Driver CD into your CD/DVD-ROM drive.
2. Locate the Setup.exe application. This file will be located in the root directory of the Driver CD (e.g. D:\) or downloaded file.
3. Executing the Setup.exe application will launch the following screen. Please click Next > to start installation process. The set-up program will install the device driver and software application respectively.

**NOTE:** Ensure that the USB Video Adapter is not connected to the host computer.



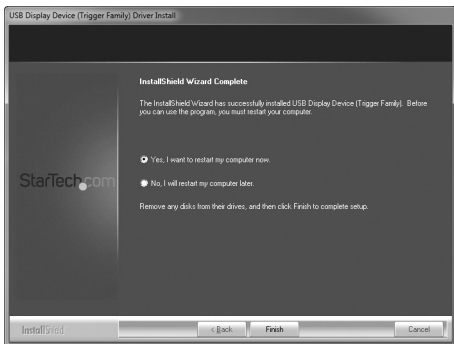
4. Once Windows has finished the driver installation, it will prompt you to restart the computer. Select "Yes, I want to restart my computer now", and click the "Finish" button.

# Hardware Installation

1. Once the computer has restarted connect your USB32HDEH device via the USB cable to your PC.



2. The system will initiate driver and software application (screen may flash or go black during the install).



3. Connect your HDMI® monitor to the available HDMI® port on the USB32HDEH device.
4. The USB Video Adapter is now ready for use.

## USB HUB Installation (Optional)

This device includes a 1 port USB 3.0 hub to replace the port taken up by the device.

Note: If the USB display adapter is connected to a USB 2.0 host port, the hub will only operate at USB 2.0 speeds.

1. Ensure the Hardware Installation steps have been completed. USB Hub drivers will install as part of the installation when device is connected.
2. Connect the USB A type cable from your desired USB device to USB female port on the Display adapter.
3. Follow any installation steps for the device connected.


# Multiple USB Video Adapter Installation

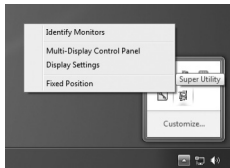
Ensure you have the latest version of the drivers installed, otherwise, please download them from the StarTech.com website ([www.startech.com](http://www.startech.com)).

1. Complete the standard driver installation steps, up to when you plug in the first USB Video Adapter.
2. Connect another monitor/display to the second USB Video Adapter, and turn on the display.
3. Connect the USB type A connector on the second USB Video Adapter to an available USB 3.0 port on the host computer. The driver installation will begin automatically.

Repeat these steps for each additional USB Video Adapter you wish to install. Once all USB Video Adapters are installed, reboot the computer. After rebooting, you may be prompted to reboot one final time; please do so.

## Configuring the USB Video Adapter

Look for the "USB Video Adapter" icon (  ) on your Windows System Tray (next to Clock). Right-click this icon to configure the adapter using the options explained in detail below.

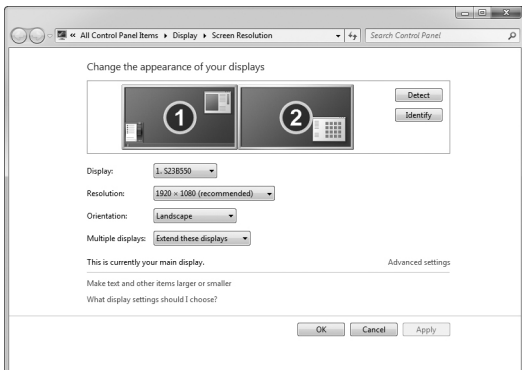




# Display Settings

Quick access to the Windows® “Display Settings” window.

This option allows you to use the Windows® native Display Settings to adjust all settings including: Resolution, monitor placement, and choose whether the additional will extend or mirror the main display.



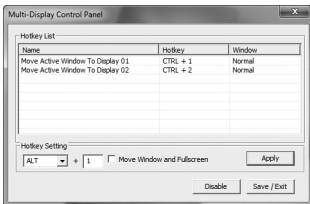
## Identify Monitors

This option displays the identification number assigned by Windows® to differentiate between each monitor. Using an easy to read overlay this number is displayed in the upper right corner of each monitor.



# Multi-Display Control Panel

This unique feature allows for quicker and simpler management of a multi-display environment using a series of hotkeys to quickly move the active program window to the desired display (either on-board or each USB Video Adapter).



The default setting of the hotkeys can be found in the Hotkey List of “Multi-Display Control Panel”.

**Example:** Ctrl + 2 means: to move the window to Display 2

# Specifications

<b>AV Input</b>	USB 3.0
<b>Interface</b>	USB
<b>Max Resolution</b>	1920x1200
<b>AV Output</b>	HDMI
<b>Chipset ID</b>	MCT Trigger T5-302
<b>Color</b>	Black
<b>Enclosure Type</b>	Plastic
<b>Audio</b>	Yes
<b>Maximum Digital Resolutions</b>	1920x1200 / 1080p
<b>OS Compatibility</b>	Windows® 7 (32/64bit) Windows® 8 (32/64bit)
<b>Industry Standards</b>	SuperSpeed USB 3.0, USB 2.0
<b>Supported Resolutions</b>	<b>Widescreen(16/32 bit):</b> 1920x1200, 1920x1080, 1680x1050, 1600x900, 1440x900, 1360x768, 1280x800, 1280x768, 1280x720  <b>Standard(16/32 bit):</b> 1600x1200, 1400x1050, 1280x1024, 1280x960, 1152x864, 1024x768, 800x600
<b>Wide Screen Supported</b>	Yes

**NOTE:** Connect a maximum of five USB32HDEH adapters on a single PC

# Technical Support

StarTech.com's lifetime technical support is an integral part of our commitment to provide industry-leading solutions. If you ever need help with your product, visit [www.startech.com/support](http://www.startech.com/support) and access our comprehensive selection of online tools, documentation, and downloads.

For the latest drivers/software, please visit [www.startech.com/downloads](http://www.startech.com/downloads)

## Warranty Information

This product is backed by a two year warranty.

In addition, StarTech.com warrants its products against defects in materials and workmanship for the periods noted, following the initial date of purchase. During this period, the products may be returned for repair, or replacement with equivalent products at our discretion. The warranty covers parts and labor costs only. StarTech.com does not warrant its products from defects or damages arising from misuse, abuse, alteration, or normal wear and tear.

### Limitation of Liability

In no event shall the liability of StarTech.com Ltd. and StarTech.com USA LLP (or their officers, directors, employees or agents) for any damages (whether direct or indirect, special, punitive, incidental, consequential, or otherwise), loss of profits, loss of business, or any pecuniary loss, arising out of or related to the use of the product exceed the actual price paid for the product. Some states do not allow the exclusion or limitation of incidental or consequential damages. If such laws apply, the limitations or exclusions contained in this statement may not apply to you.

Hard-to-find made easy. At StarTech.com, that isn't a slogan. It's a promise.

StarTech.com is your one-stop source for every connectivity part you need. From the latest technology to legacy products — and all the parts that bridge the old and new — we can help you find the parts that connect your solutions.

We make it easy to locate the parts, and we quickly deliver them wherever they need to go. Just talk to one of our tech advisors or visit our website. You'll be connected to the products you need in no time.

Visit [www.startech.com](http://www.startech.com) for complete information on all StarTech.com products and to access exclusive resources and time-saving tools.

*StarTech.com is an ISO 9001 Registered manufacturer of connectivity and technology parts. StarTech.com was founded in 1985 and has operations in the United States, Canada, the United Kingdom and Taiwan servicing a worldwide market.*