

External V.92 56K USB Data/Fax Modem - Hardware Based

USB56KEMH

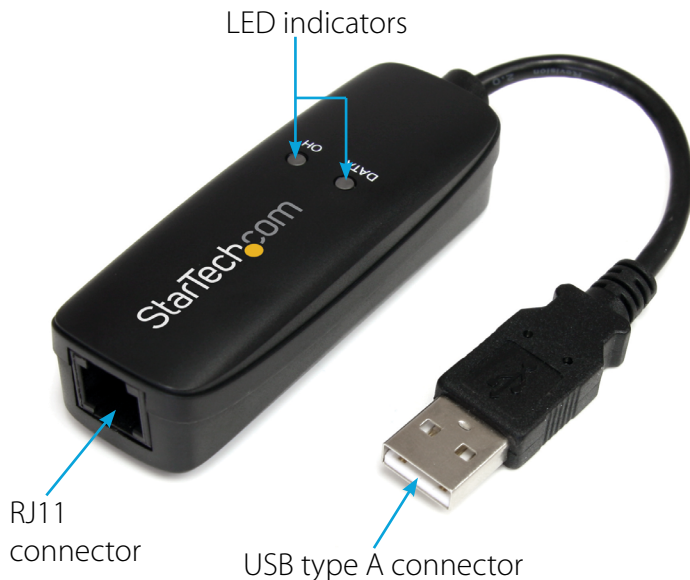
- DE: Bedienungsanleitung - de.startech.com
- FR: Guide de l'utilisateur - fr.startech.com
- ES: Guía del usuario - es.startech.com
- IT: Guida per l'uso - it.startech.com
- NL: Gebruiksaanwijzing - nl.startech.com
- PT: Guia do usuário - pt.startech.com

Packaging Contents

- 1 x USB Modem
- 1 x RJ11 Cable
- 1 x Driver CD
- 1 x Instruction Manual

System Requirements

- USB enabled computer system with available USB port
- Windows® 8 (32/64-bit), 7 (32/64), Vista (32/64), XP SP3 (32/64)
Windows® Server 2012, 2008 R2, 2003 (32/64)
- Mac OS 10.7 and up (Tested up to 10.9)

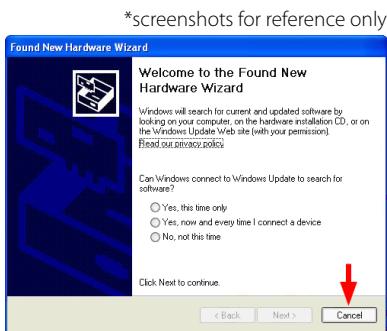


*actual product may vary from photos

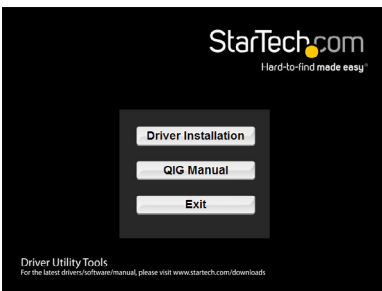
Installation

Windows 2000/XP/Server 2003

1. Upon starting Windows, if the "Found New Hardware" wizard appears on the screen, cancel/close the window and insert the included Driver CD into the computer's CD/DVD drive.



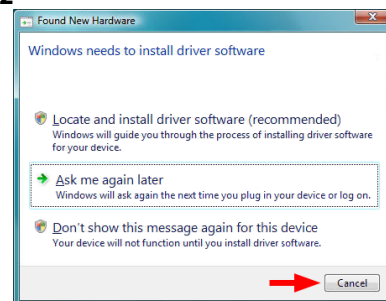
2. AutoRun will automatically launch the Driver/Software installation splash screen. If not, open "My Computer" and right-click on the CD/DVD drive the disk is inserted into and select "AutoRun".



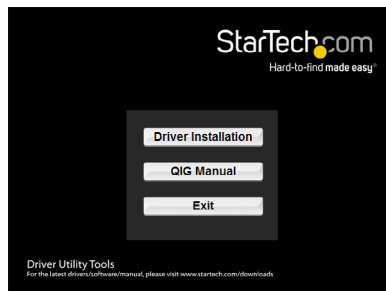
3. Select the option to install the Drivers, then select your operating system version. This should then launch the Driver Installation wizard.
4. Complete the wizard and this should automatically install all necessary drivers/software.

Windows Vista/7/Server 2008 R2

1. Upon starting Windows, if the "Found New Hardware" wizard appears on the screen, cancel/close the window or choose not to install the drivers and insert the included Driver CD into the computer's CD/DVD drive.



2. AutoRun should automatically launch the Driver/Software installation splash screen or prompt you to run AutoRun.exe. If not, open "Computer" and right-click on the CD/DVD drive the disk is inserted into and select "AutoRun".



3. Select the option to install the Drivers, then select your operating system version. This should then launch the Driver Installation wizard.
4. Complete the wizard and this should automatically install all necessary drivers/software.

Specifications

Host Interface	USB 1.1
Chipset	Conexant - CX93010
LEDs	1 x Data 1 x On Hold
Connectors	1 x RJ11 Female 1 x USB A Male
Supported Modulations (Modem)	ITU-T V.92/V.90, V.34, V.32bis, V.32, V.22bis, V.22, V.23, V.21 Bell 212A and Bell 103
Supported Modulations (Fax)	V.17, V.29, V.27 Ter, V.21 Channel 2
Data Compression	V.44
Max Data Transfer Rate	56 Kbps Down 36.6 Kbps Up Fax: 14.4 Kbps
Power Adapter	USB-Powered
Enclosure Material	Plastic
Operating Temperature	0°C to 55°C (32°F to 122°F)
Storage Temperature	-20°C to 70°C (-4°F to 158°F)

Humidity	10~90% RH
Dimensions	77 x 27 x 20 mm
Weight	30g
Compatible Operating Systems	Windows® 8 (32/64-bit), 7 (32/64), Vista (32/64), XP SP3 (32/64) Windows® Server 2012, 2008 R2, 2003 (32/64) Mac OS 10.7 and up (Tested up to 10.9)

LED Indicators

Name	Description
Data	Indicates when data is sending/receiving
OH	Indicates the modem is in use (dialing/connected)

FCC Compliance Statement

This equipment has been tested and found to comply with the limits for a Class B digital device, pursuant to part 15 of the FCC Rules. These limits are designed to provide reasonable protection against harmful interference in a residential installation. This equipment generates, uses and can radiate radio frequency energy and, if not installed and used in accordance with the instructions, may cause harmful interference to radio communications. However, there is no guarantee that interference will not occur in a particular installation. If this equipment does cause harmful interference to radio or television reception, which can be determined by turning the equipment off and on, the user is encouraged to try to correct the interference by one or more of the following measures:

- Reorient or relocate the receiving antenna.
- Increase the separation between the equipment and receiver.
- Connect the equipment into an outlet on a circuit different from that to which the receiver is connected.
- Consult the dealer or an experienced radio/TV technician for help.

FCC Part 68 Statement

This equipment complies with Part 68 of the FCC rules and the requirements adopted by the ACTA. On the bottom of this equipment is a label that contains, among other information, a product identifier in the format US:AAAEQ##TXXXX. If requested, this number must be provided to the telephone company.

This equipment uses the following Universal Service Order Code (USOC) jacks: RJ11C.

A plug and jack used to connect this equipment to the premises wiring and telephone network must comply with the applicable FCC Part 68 rules and requirements adopted by the ACTA. A compliant telephone cord and modular plug is provided with this product. It is designed to be connected to a compatible modular jack that is also compliant. See installation instructions for details.

The REN is used to determine the number of devices that may be connected to a telephone line. Excessive RENs on a telephone line may result in the devices not ringing in response to an incoming call. In most but not all areas, the sum of RENs should not exceed five (5.0). To be certain of the number of devices that may be connected to a line, as determined by the total RENs, contact the local telephone company. The REN for this product is part of the product identifier that has the format US:AAAEQ##TXXXX. The digits represented by ## are the REN without a decimal point (e.g., 03 is a REN of 0.3). If this equipment causes harm to the telephone network, the telephone company will notify you in advance that temporary discontinuance of service may be required. But if advance notice isn't practical, the telephone company will notify the customer as soon as possible. Also, you will be advised of your right to file a complaint with the FCC if you believe it is necessary.

The telephone company may make changes in its facilities, equipment, operations or procedures that could affect the operation of the equipment. If this happens the telephone company will provide advance notice in order for you to make necessary modifications to maintain uninterrupted service.

If trouble is experienced with this equipment, for repair or warranty information, please contact StarTech.com at 1-800-265-1844. If the equipment is causing harm to the telephone network, the telephone company may request that you disconnect the equipment until the problem is resolved.

There are no serviceable parts in this equipment.

Connection to party line service is subject to state tariffs. Contact the state public utility commission, public service commission or corporation commission for information.

If your home has specially wired alarm equipment connected to the telephone line, ensure the installation of this equipment does not disable your alarm equipment.

If you have questions about what will disable alarm equipment, consult your telephone company or a qualified installer.

Industry Canada CS03 Statement

This product meets the applicable Industry Canada technical specifications. / Le présent matériel est conforme aux spécifications techniques applicables d'Industrie Canada.

The Ringer Equivalence Number (REN) is an indication of the maximum number of devices allowed to be connected to a telephone interface. The termination of an interface may consist of any combination of devices subject only to the requirement that the sum of the RENs of all the devices not exceed five. / L'indice d'équivalence de la sonnerie (IES) sert à indiquer le nombre maximal de terminaux qui peuvent être raccordés à une interface téléphonique. La terminaison d'une interface peut consister en une combinaison quelconque de dispositifs, à la seule condition que la somme d'indices d'équivalence de la sonnerie de tous les dispositifs n'excède pas cinq.

Use of Trademarks, Registered Trademarks, and other Protected Names and Symbols

This manual may make reference to trademarks, registered trademarks, and other protected names and/or symbols of third-party companies not related in any way to StarTech.com. Where they occur these references are for illustrative purposes only and do not represent an endorsement of a product or service by StarTech.com, or an endorsement of the product(s) to which this manual applies by the third-party company in question. Regardless of any direct acknowledgement elsewhere in the body of this document, StarTech.com hereby acknowledges that all trademarks, registered trademarks, service marks, and other protected names and/or symbols contained in this manual and related documents are the property of their respective holders.

Technical Support

StarTech.com's lifetime technical support is an integral part of our commitment to provide industry-leading solutions. If you ever need help with your product, visit www.startech.com/support and access our comprehensive selection of online tools, documentation, and downloads. For the latest drivers/software, please visit www.startech.com/downloads

Warranty Information

This product is backed by a two year warranty. In addition, StarTech.com warrants its products against defects in materials and workmanship for the periods noted, following the initial date of purchase. During this period, the products may be returned for repair, or replacement with equivalent products at our discretion. The warranty covers parts and labor costs only. StarTech.com does not warrant its products from defects or damages arising from misuse, abuse, alteration, or normal wear and tear.

Limitation of Liability

In no event shall the liability of StarTech.com Ltd. and StarTech.com USA LLP (or their officers, directors, employees or agents) for any damages (whether direct or indirect, special, punitive, incidental, consequential, or otherwise), loss of profits, loss of business, or any pecuniary loss, arising out of or related to the use of the product exceed the actual price paid for the product. Some states do not allow the exclusion or limitation of incidental or consequential damages. If such laws apply, the limitations or exclusions contained in this statement may not apply to you.