

1/2 Port FTDI USB to Serial RS232 Adapter Cable with COM Retention

ICUSB2321F

ICUSB2322F



*ICUSB2322F



*ICUSB2321F

DE: Bedienungsanleitung - de.startech.com

FR: Guide de l'utilisateur - fr.startech.com

ES: Guía del usuario - es.startech.com

IT: Guida per l'uso - it.startech.com

NL: Gebruiksaanwijzing - nl.startech.com

PT: Guia do usuário - pt.startech.com

For the most up-to-date information, please visit: www.startech.com

FCC Compliance Statement

This equipment has been tested and found to comply with the limits for a Class B digital device, pursuant to part 15 of the FCC Rules. These limits are designed to provide reasonable protection against harmful interference in a residential installation. This equipment generates, uses and can radiate radio frequency energy and, if not installed and used in accordance with the instructions, may cause harmful interference to radio communications. However, there is no guarantee that interference will not occur in a particular installation. If this equipment does cause harmful interference to radio or television reception, which can be determined by turning the equipment off and on, the user is encouraged to try to correct the interference by one or more of the following measures:

- Reorient or relocate the receiving antenna.
- Increase the separation between the equipment and receiver.
- Connect the equipment into an outlet on a circuit different from that to which the receiver is connected.
- Consult the dealer or an experienced radio/TV technician for help.

Use of Trademarks, Registered Trademarks, and other Protected Names and Symbols

This manual may make reference to trademarks, registered trademarks, and other protected names and/or symbols of third-party companies not related in any way to StarTech.com. Where they occur these references are for illustrative purposes only and do not represent an endorsement of a product or service by StarTech.com, or an endorsement of the product(s) to which this manual applies by the third-party company in question. Regardless of any direct acknowledgement elsewhere in the body of this document, StarTech.com hereby acknowledges that all trademarks, registered trademarks, service marks, and other protected names and/or symbols contained in this manual and related documents are the property of their respective holders.

Table of Contents

Introduction	1
Packaging Contents	1
System Requirements.....	1
ICUSB2321F Front View	2
ICUSB2322F Front View	2
Installation	3
Hardware Installation	3
Verifying Installation.....	4
Pinout	4
Specifications	5
Technical Support	6
Warranty Information	6

Introduction

The ICUSB2322F/ICUSB2321F 2-Port USB to Serial RS232 Adapter Cable with FTDI chipset and COM Retention converts an available USB 1.1 or 2.0 port into 2 RS232 serial DB9 ports to connect, monitor and control your serial devices.

This compact adapter features COM retention, allowing the same COM port values to automatically be re-assigned to the port if the cable is disconnected and re-connected to the host computer, or if the system is rebooted. Unlike most USB-serial adapters, this one uses the FTDI chipset, which supports additional customization, advanced features, and compatibility not necessarily offered by other solutions.

This USB-serial adapter is compatible with a broad list of Operating Systems, including Windows®, Windows CE, Mac OS and Linux, making this product the perfect solution for integrating into mixed environments.

Backed by a StarTech.com 2-year warranty and free lifetime technical support.

Packaging Contents

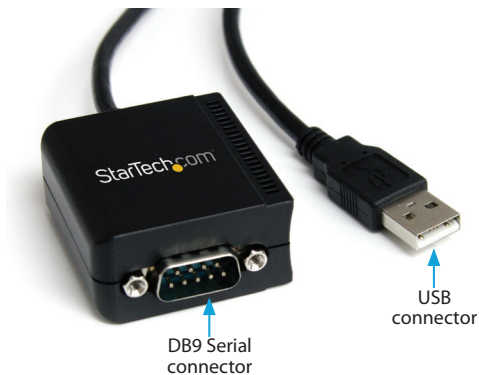
- 1x Driver CD
- 1x Instruction Manual
- 1x USB to RS-232 Serial Adapter
- 1x Wall Mounting Kit (ICUSB2322F only)

System Requirements

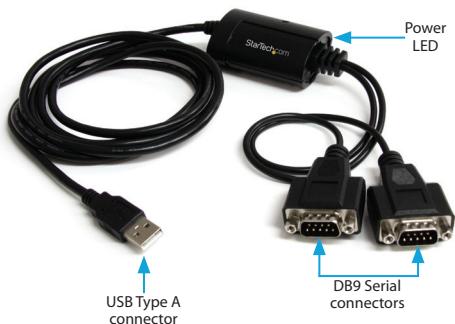
- USB enabled computer system with available USB port
- Windows® 7 (32/64bit)/ 8 (32/64bit)/ Vista(32/64)/ XP(32/64)/ 2000/ CE(4.2+)
Windows® Server 2008 R2/ 2003(32/64) Mac OS 9.x, 10.x Linux

*actual product may vary from photos

ICUSB2321F Front View



ICUSB2322F Front View



Installation

Hardware Installation

Windows 2000/XP/Server 2003

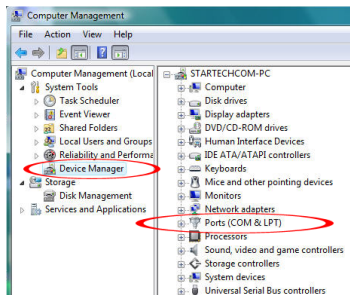
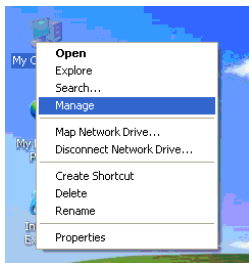
1. Plug the USB adapter into an available USB port on the computer.
2. When the Found New Hardware wizard appears on the screen, insert the Driver CD into your CD/DVD drive. If you are prompted to connect to Windows Update, please select the "No, not this time" option and click Next.
3. Select the option "Install Drivers Automatically (Recommended)" and then click the Next button.
4. Windows should now start searching for the drivers and install them automatically. Once this has completed, click the Finish button.
5. If Windows is unable to locate drivers, press the "Back" button or restart the wizard and select the advanced option to have it search the "USB_to_IO\FTDI" location on the CD.

Windows Vista/7/Server 2008 R2/8

1. Plug the USB adapter into an available USB port on the computer.
2. When the Found New Hardware window appears on the screen, click on the "Locate and install drivers software (recommended)" option. If prompted to search online, select the "Don't search online" option.
3. When prompted to insert the disc, insert the Driver CD that came with the card, into your CD/DVD drive and Windows will automatically proceed to search the CD.
4. If a Windows Security dialog window appears, click the "Install this driver software anyway" option to proceed.
5. Once the driver is installed, click the Close button.
6. If Windows is unable to locate drivers, press the "Back" button or restart the wizard and select the option to "Browse the computer" and have it search the "USB_to_IO\FTDI" location on the CD.

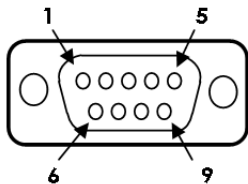
Verifying Installation

From the main desktop, right-click on “My Computer” (“Computer” in Vista/7), then select Manage. In the new Computer Management window, select Device Manager from the left window panel.



Double-click on the “Ports (COM & LPT)” option. An additional COM port should be visible. The port is sequentially numbered automatically by Windows. The port is ready to connect to new devices.

Pinout



<u>9 Pins</u>	<u>Signal</u>
1	DCD
2	RXD
3	TXD
4	DTR
5	GND
6	DSR
7	RTS
8	CTS
9	RI

Specifications

	ICUSB2321F	ICUSB2322F
Number of Ports	1	2
Host Interface	USB 2.0	
Chipset ID	FTDI FT232R	FTDI FT2232D
Connectors	1 x USB type A male 1 x 9-pin DB9 male	1 x USB type A male 2 x 9-pin DB9 male
LEDs	N/A	
Supported Protocols	RS232	
Data Bits	7, 8	
Stop Bits	1, 2	
Parity	None, Odd, Even, Mark, Space	
Maximum Data Transfer Rate	115.2 Kbps	921.6 Kbps
Operating Temperature	0°C ~ 55°C (32°F ~ 131°F)	
Storage Temperature	-20°C ~ 85°C (32°F ~ 185°F)	
Humidity	5 ~ 95% RH	
Cable Length	1.83m / 6ft	2.14m / 7ft
Dimensions	45.0mm x 41.5mm x 22.0mm	N/A
Weight	200g	300g
Compatible Operating Systems	Windows 2000/XP/Server 2003/Vista/Server 2008 R2/7 (32/64-bit)/ 8 (32/64bit), Windows CE 4.2+, Mac OS 9.x/10/x, Linux	

Technical Support

StarTech.com's lifetime technical support is an integral part of our commitment to provide industry-leading solutions. If you ever need help with your product, visit www.startech.com/support and access our comprehensive selection of online tools, documentation, and downloads.

For the latest drivers/software, please visit www.startech.com/downloads

Warranty Information

This product is backed by a two year warranty.

In addition, StarTech.com warrants its products against defects in materials and workmanship for the periods noted, following the initial date of purchase. During this period, the products may be returned for repair, or replacement with equivalent products at our discretion. The warranty covers parts and labor costs only. StarTech.com does not warrant its products from defects or damages arising from misuse, abuse, alteration, or normal wear and tear.

Limitation of Liability

In no event shall the liability of StarTech.com Ltd. and StarTech.com USA LLP (or their officers, directors, employees or agents) for any damages (whether direct or indirect, special, punitive, incidental, consequential, or otherwise), loss of profits, loss of business, or any pecuniary loss, arising out of or related to the use of the product exceed the actual price paid for the product. Some states do not allow the exclusion or limitation of incidental or consequential damages. If such laws apply, the limitations or exclusions contained in this statement may not apply to you.

Hard-to-find made easy. At StarTech.com, that isn't a slogan. It's a promise.

StarTech.com is your one-stop source for every connectivity part you need. From the latest technology to legacy products — and all the parts that bridge the old and new — we can help you find the parts that connect your solutions.

We make it easy to locate the parts, and we quickly deliver them wherever they need to go. Just talk to one of our tech advisors or visit our website. You'll be connected to the products you need in no time.

Visit www.startech.com for complete information on all StarTech.com products and to access exclusive resources and time-saving tools.

StarTech.com is an ISO 9001 Registered manufacturer of connectivity and technology parts. StarTech.com was founded in 1985 and has operations in the United States, Canada, the United Kingdom and Taiwan servicing a worldwide market.